



Wiskind Manufacturing Base in Jiangsu

CASSETTE™ Curtain Wall Panel

*Thermally broken, non-penetrating fixing structure,
and 4-side joint sandwich panels*



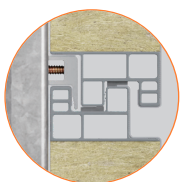


ABOUT WISKIND

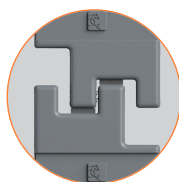
Wiskind Architectural Steel (WAS) is a specialized manufacturer and service provider of metal building envelope system, based in Shandong Province, China. The WAS product series covering: façade, roofing, cleanroom, cold storage and box-housing etc. Please visit www.wiskind.com for detail.

CASSETTE™ is a new-type thermally broken sandwich panel. It features a non-penetrating fixing structure, and coming with accurately formed panel with seamless rounded corner, high-quality water-repellent rockwool core, multi-cavity broken bridge profiles, and high-quality flame-retardant foam sealing strips, to give full play to the excellent functions of the product. It is a curtain wall product integrating broken bridge, insulation and decoration, and targeted at high-end industrial buildings and public buildings.

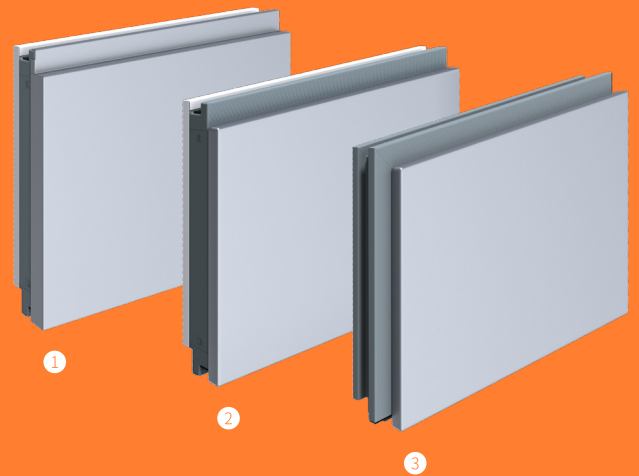
- The broken bridge structure without penetrating screws, as well as the non-penetrating installation method, ensures the integrity of the thermal insulation layer and greatly improves the thermal insulation performance.
- Multi-cavity airtight structure is formed at the joint of the PVC profile takes into account of both the heat preservation and insulation.
- High-density thermal insulation, fireproof and water-repellent rockwool for better thermal insulation performance.
- The seamless rounded corner process avoids the hidden trouble of corrosion and water seepage of the panel, and shows the delicate texture and exquisite details of the material.



Joint Profile



Joint



1. CASSETTE™ thermally broken curtain wall panel.
2. CASSETTE™ Plus thermally broken curtain wall panel with seamless rounded corner.
3. CASSETTE™ Pro thermally broken curtain wall panel with seamless rounded corner and 4-side joint.

PRODUCT SPECIFICATION

| | | |
|----------------|-----------------|---------------------------------------|
| Face-plate | Thickness (mm) | Exterior panel (coated steel) 0.7-0.8 |
| | | Interior panel (coated steel) 0.5-0.7 |
| | Length (mm) | CASSETTE™ 400-10,000 |
| | | Plus/Pro 600-4,000 |
| | Width (mm) | 500-1,200 |
| Insulated core | Coating | PVDF / HDP / PE |
| | Core material | Rockwool |
| | VW (kg/m³) | 100-120 |
| | Thickness (mm) | 60/80/100 |
| | U Value (w/m-k) | ≤0.043 |
| Panel-type | Fire rating | Class A |
| | Joint | 4-sided joint |
| Process | - | Continuous production |